

MicroStep®

spol. s r.o.



MG

- The MG type machines are designed for long-lasting industrial use and meet the highest requirements of precision, performance and ease of operation
- High-quality cutting with high-definition plasma as well as with standard air plasma sources
- Excellent motion dynamics
- Efficient and user-friendly PC-based CNC control system iMSNC®
- Meeting of comprehensive safety and environmental standards
- Excellent exhausting efficiency provided by a sectional cutting table with intelligent extraction system based on electronic control of suction zones, designed to meet the standards of high-speed plasma cutting
- Sharp angles and corners of cut parts as well as high contour precision resulting from helical rack and split helical pinion drives
- Advanced height control for plasma cutting based on proprietary adaptive algorithms backed by ball screw actuated Z axis
- Manual control units mounted on the gantry providing all positioning and technology control functions
- Covers for protection of mechanical parts against fumes and damages





MG



Technical parameters*

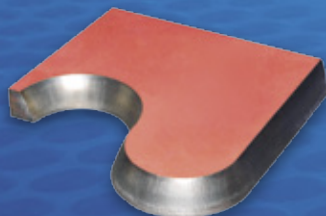
Working length	1 500 – 50 000 mm
Working width	1 500 – 8 000 mm
Max. number of tool stations	8
Max. thickness of material cut by oxyfuel	150 mm (optionally 250 mm)
Positioning speed	up to 35 m/min
Control system	MicroStep iMSNC®
Type of guides in X, Y direction	linear guidelines

* depends on the machine configuration

MicroStep®

spol. s r.o.

MicroStep spol. s r.o. tel.: +421 2 32 27 72 00
Vajnorská 158 fax: +421 2 32 27 70 01
831 04 Bratislava www.microstep.eu
Slovakia e-mail: marketing@microstep.sk



www.microstep.eu

Easy to operate

MicroStep iMSNC® is one of the most advanced control systems in CNC cutting machinery. The system provides easy, user friendly and thus reliable operation of cutting machines via modern user interfaces: a standalone operator console with TFT touch screen and one or two control panels with LCD displays on the sides of the gantry. To achieve maximum utilization and flexibility of machine operation, a standalone operator console offers the possibility to prepare and edit cutting plans simultaneously with the cutting process. Since the machine, control system iMSNC® and CAM software AsperWin® are from one producer – MicroStep – it allows to implement also non-standard requests and develop custom solutions.

- Integrated database of tool parameters
- Multi-tool operation
- Automatic assignment of tool parameters to processed material
- Full network connectivity
- Remote diagnostics and assistance
- Parametrical dynamic piercing
- Zone management with batch cutting
- Monitoring of consumable life
- Advanced servicing software tools

Intranet applications

Intranet applications enable comfortable integration of the machine into production workflow and provide access to the machine via SQL databases and web services. MicroStep iMSNC® includes a novel web-based interface for accessing each machine from the company intranet via a web browser. Each machine has its own home page which serves as a gateway for intranet applications.

MicroStep Production Management (MPM) – adds computer-aided process planning (CAPP) capabilities to MicroStep solutions. An integrated system of order processing, nesting, stock control, machine operation planning and evaluation helps to reduce work-in-progress, to save material, and to eliminate operator errors.

EkolInfo – evaluation of machine operation costs for a particular cutting program.

Machine Info – monitoring of machine and operator activities that enables to assign performance information to work shifts and to create specific technological records.



OPTIONAL ACCESSORIES



Plasma



Plasma rotator



ACTG



Tilting tool station



Oxyfuel



Oxy triple torch



Gm tool station



Drilling tool station



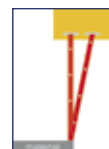
Pipe cutting device



Inkjet



MicroPunch



Automatic plate alignment



CCD camera



Second touch screen on gantry

The descriptions, technical data and illustrations contained in this document are provided for guidance purpose only and are non-binding. The manufacturer reserves the right to make changes without notification.